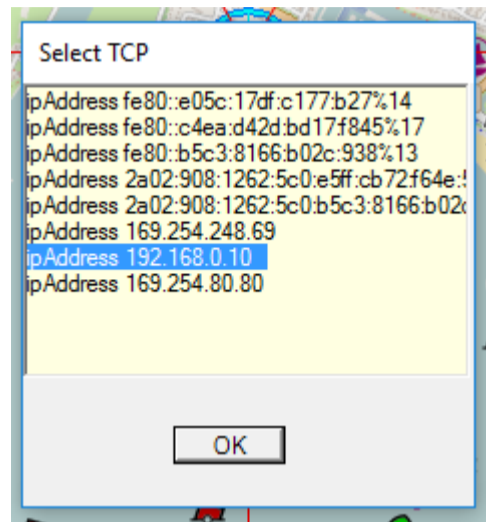
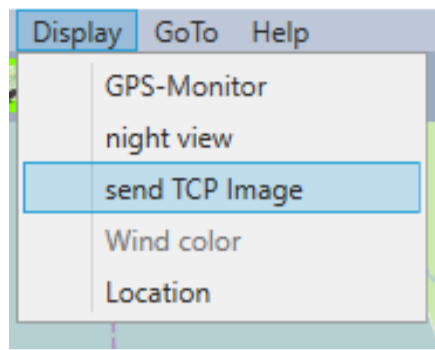


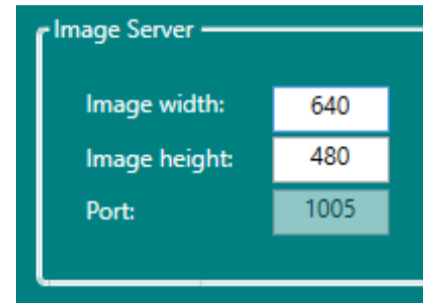
WinNavMonitor

How do I connect the WinNav monitor with GPS-32?

Display your position over a GPS or the GPS simulator.
In GPS-32, select "Display / send TCP Image". Then select an IP address.



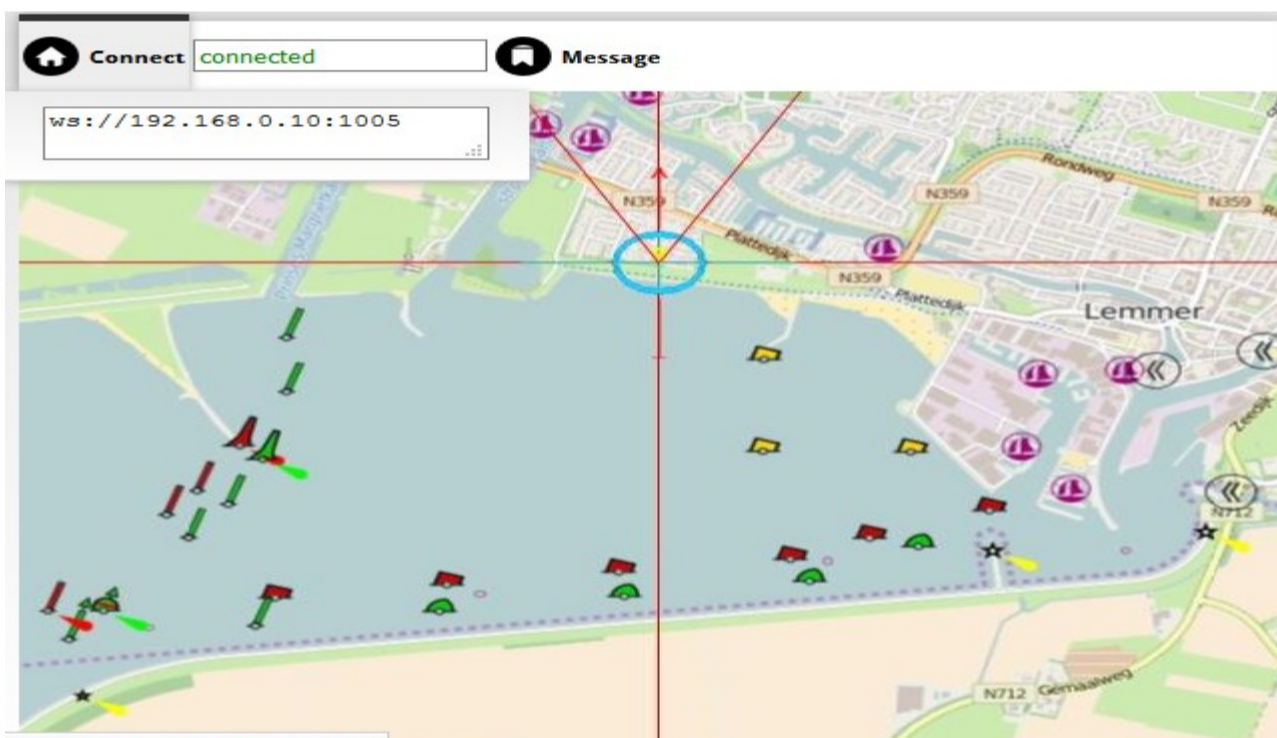
Just for info:
In GPS-32, setting / network / Image-Server image size can be adjusted. The port is set to 1005



Start WinNav Monitor.html in your browser.
The browser must support WebSocket. (Eg FireFox can.)

Place the cursor on "Connect" and enter into the below-appearing box your selected connection in the format "ws: //" IPaddress: port.

ws: //192.168.0.10 1005



Once connected, you can click on "Message / Picture size" view the map in full screen mode.

